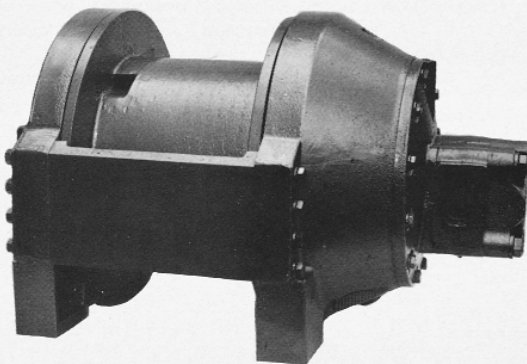


Ryan  Click Here To Visit
Hydraulic Service, Inc.

PL8

PLANETARY, HYDRAULIC WINCH



**EQUAL SPEED
EEDS TYN03**

 **pull**

MASTER 

THE LOGICAL CHOICE

MODEL PL8 PLANETARY HYDRAULIC WINCH

DESCRIPTION

The PULLMASTER Model PL8 is a high performance, high efficiency planetary winch, having equal speed in both directions of rotation. The cable drum of this unit conforms with OSHA recommendations making this winch especially suitable for applications where a load is raised or lowered.

The PULLMASTER Model PL8 is powered by a hydraulic gear motor and a reduction ratio of 42.5:1 is established by two planetary stages. The automatic multi-disc brake of this unit is "Spring Applied - Pressure Released". An over-running clutch, installed between the motor drive shaft and the brake assembly, permits free rotation in the "Hoisting" direction without affecting the brake. During "Lowering" operation the over-running clutch locks, causing the brake discs to rotate between a series of divider discs. Dynamic braking is then achieved by modulation of the winch control valve handle. When the control is returned to neutral position the brake applies automatically. A counter-balance valve is not required for smooth and positive "Down" control of the PULLMASTER Model PL8 planetary winch.

All moving parts of the PULLMASTER Model PL8 planetary winch are totally enclosed and run in an oil bath. Anti-friction bearings are used on all turning components, assuring long, trouble free service with a minimum requirement for maintenance.

PERFORMANCE

- Based on a hydraulic volume of 37 (US) gpm (140 l/min) at 2150 psi (148 bar) hydraulic pressure
- Drum rpm at maximum hydraulic volume = 46 rpm
- Drum torque at a maximum hydraulic pressure = 35438 lb-in (4004 Nm)
- Performance based on a Commercial Shearing WM31 hydraulic motor (2" gear width).

MODEL NUMBER	BARE DRUM			MEAN DRUM			FULL DRUM		
	LINE PULL	LINE SPEED		LINE PULL	LINE SPEED		LINE PULL	LINE SPEED	
		FORWARD	REVERSE		FORWARD	REVERSE		FORWARD	REVERSE
PL8-3-30-1	7000 lb	122 fpm	122 fpm	6101 lb	143 fpm	143 fpm	5202 lb	164 fpm	164 fpm
	31.1 kN	37 m/min	37 m/min	27.2 kN	44 m/min	44 m/min	23.2 kN	50 m/min	50 m/min
PL8-3-30-2	7000 lb	122 fpm	122 fpm	6101 lb	143 fpm	143 fpm	5202 lb	164 fpm	164 fpm
	31.1 kN	37 m/min	37 m/min	27.2 kN	44 m/min	44 m/min	23.2 kN	50 m/min	50 m/min

When a PULLMASTER Model PL8 planetary winch is installed in an existing hydraulic circuit with a lesser volume and/or pressure the performance will change. Maximum hydraulic volume must not be exceeded.

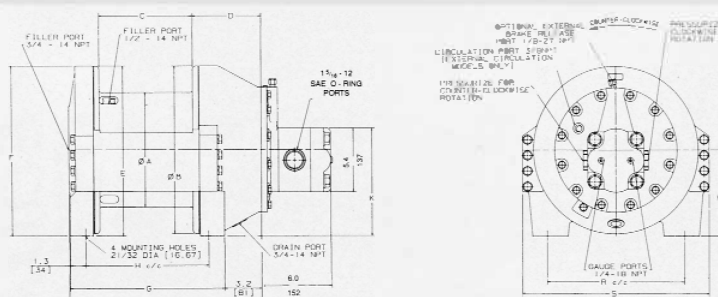
CABLE STORAGE

CABLE STORAGE CAPACITY FOR WIRE ROPE (THEORETICAL)

MODEL NUMBER	DRUM SIZE			WIRE ROPE DIAMETERS								
	DRUM	FLANGE	LENGTH	1/8"	3/16"	1/4"	5/16"	3/8"	7/16"	1/2"	9/16"	5/8"
PL8-3-30-1	9.63"	14.13"	8.00"	2720 ft	1234 ft	684 ft	462 ft	294 ft	215 ft	196 ft	140 ft	130 ft
	245 mm	359 mm	203 mm	829 m	376 m	209 m	141 m	90 m	66 m	60 m	43 m	40 m
PL8-3-30-2	9.63"	14.13"	10.00"	3400 ft	1543 ft	855 ft	577 ft	367 ft	269 ft	245 ft	175 ft	162 ft
	245 mm	359 mm	254 mm	1036 m	470 m	261 m	176 m	112 m	82 m	75 m	53 m	49 m

The cable anchor of the PULLMASTER Model PL8 planetary winch is not designed to hold the rated maximum load. The cable drum requires 4-6 wraps of wire rope for security.

DIMENSIONS



DRUM CODE	A	B	C	D	E	F	G	H	J	K	M	R	S	
-1	9.6	14.1	8.0	5.9	14.3	14.3	13.3	10.557	16.5	9.1	7.25	11.750	16.0	in
	244	359	203	150	364	364	337	268.15	420	230	184.2	298.45	406	mm
-2	9.6	14.1	10.0	5.9	14.3	14.3	15.3	12.557	18.5	9.1	7.25	11.750	16.0	in
	244	359	254	150	364	364	388	318.95	471	230	184.2	298.45	406	mm

PULLMASTER planetary winches are covered by a liberal warranty. Parts and Repair Service are available from authorized PULLMASTER distributors throughout Canada, the United States and in most over-seas areas.

IMPORTANT

PULLMASTER planetary winches are neither designed nor intended for installation on equipment used in lifting or moving of personnel.

DISTRIBUTOR

