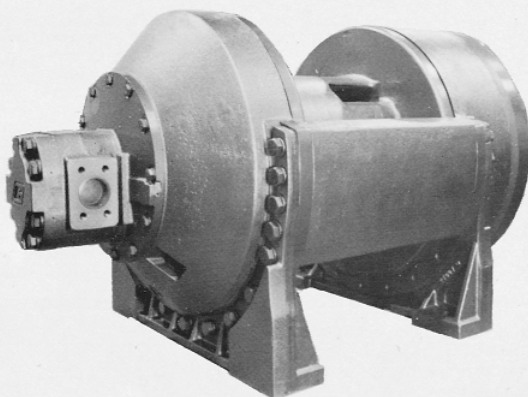


Ryan  **Click Here To Visit**
Hydraulic Service, Inc.

H50

PLANETARY, HYDRAULIC WINCH



 **PULL**

MASTER

THE LOGICAL CHOICE

RAPID REVERSE

MODEL H50 PLANETARY HYDRAULIC WINCH

DESCRIPTION

The **PULLMASTER Model H50** is a high performance, high efficiency planetary winch with a "Rapid Reverse" feature. The reversing or lowering line speed is 4.67 times faster than forward or hoisting speed. The automatic, multi-disc brake of this unit is effective in one direction only and achieves exceptionally smooth lowering of a load. In reverse rotation (lowering) the maximum load can be positively controlled at a line speed equal to the hoisting line speed. Only loads, reduced by a ratio of 4.67 of the maximum capacity of the winch, can be safely lowered at a maximum reversing speed. The **PULLMASTER Model H50** planetary winch is powered by a hydraulic gear motor and the required reduction ratio of 116:1 is established by three planetary reduction stages. In forward rotation (hoisting) the hydraulic motor drives direct into the planetary reductions without affecting the brake assembly. When forward rotation is stopped, an over-running clutch, between the brake assembly and the motor drive shaft will lock and the multi-disc brake will positively hold the maximum load with a safety factor of 3:1. The multi-disc brake is spring applied and pressure released, requiring no calibration for fail safe operation. When the hydraulic motor is powered for reverse rotation (lowering) the brake is released automatically and is then modulated for the desired lowering speed by a single control lever. During reverse rotation the primary planet reduction is locked out, resulting in the fast reversing speed. A counter-balance valve or brake valve is not required for dynamic braking. All moving parts of the **PULLMASTER Model H50** planetary winch are totally enclosed and run in an oil bath, assuring a long, trouble free service with minimum requirement for maintenance.

OPTIONS

- SPECIAL DRUM SIZE • FREE SPOOLING • EXTERNAL BRAKE RELEASE • HYDRAULIC PISTON MOTORS • DRUM GROOVING

PERFORMANCE

Based on a hydraulic volume of 115 (US) gpm (435 l/min) at 2500 psi (172 bar) hydraulic pressure, Drum revolutions at maximum oil volume = 17.4 rpm in forward rotation and 81.2 rpm in reverse rotation. Drum torque at a maximum hydraulic pressure = 381250 lb-in (43075 Nm).

MODEL NUMBER	BARE DRUM			MEAN DRUM			FULL DRUM		
	LINE PULL	LINE SPEED		LINE PULL	LINE SPEED		LINE PULL	LINE SPEED	
		FORWARD	REVERSE		FORWARD	REVERSE		FORWARD	REVERSE
H50-7-86-1	5800 lb	69 fpm	324 fpm	4194 lb	85 fpm	401 fpm	3389 lb	102 fpm	478 fpm
	222.4 kN	21 m/min	99 m/min	186.6 kN	26 m/min	122 m/min	150.7 kN	31 m/min	146 m/min
H50-7-86-2	39610 lb	88 fpm	409 fpm	33066 lb	109 fpm	510 fpm	26522 lb	131 fpm	611 fpm
	176.2 kN	27 m/min	125 m/min	147.1 kN	33 m/min	156 m/min	118.0 kN	40 m/min	186 m/min

The volumetric requirement for the **PULLMASTER Model H50** is the recommended maximum and should not be exceeded. When the **PULLMASTER Model H50** is installed in existing hydraulic circuits with a lesser volume or lower pressure, the performance will change. Performance graphs for line speed vs. oil volume and line pull vs. hydraulic pressure are available upon request.

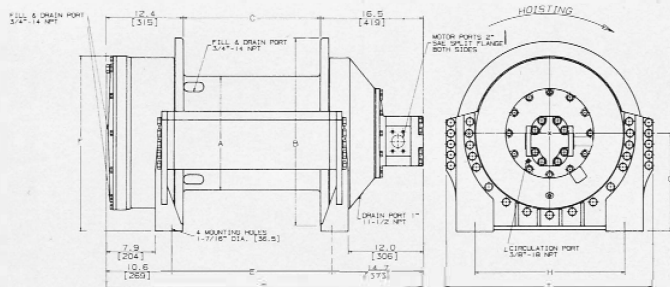
CABLE STORAGE

DRUM CABLE STORAGE CAPACITY FOR WIRE ROPE

MODEL NUMBER	DRUM SIZE			WIRE ROPE DIAMETER						
	BARREL	FLANGE	LENGTH	9/16"	5/8"	3/4"	7/8"	1"	1 1/8"	1 1/4"
H50-7-86-1	14"	23.75"	14"	854 ft	691 ft	519 ft	375 ft	276 ft	195 ft	177 ft
	356 mm	603 mm	356 mm	260 m	211 m	158 m	114 m	84 m	58 m	54 m
H50-7-86-2	18"	30"	22"	2309 ft	1725 ft	1341 ft	860 ft	654 ft	605 ft	440 ft
	457 mm	762 mm	559 mm	704 m	526 m	409 m	262 m	199 m	184 m	134 m

Contact the factory for cable drums with larger storage capacity.

DIMENSIONS



MODEL NUMBER	A	B	C	D	E	F	G	H	I
H50-7-86-1	14"	23.75"	14"	42.87"	17.63"	26.75"	14.63"	21"	27.50"
	356 mm	603 mm	356 mm	1089 mm	448 mm	680 mm	372 mm	533 mm	699 mm
H50-7-86-2	18"	30"	22"	50.78"	25.83"	30.5"	15.5"	24"	33.13"
	457 mm	762 mm	559 mm	1290 mm	651 mm	775 mm	394 mm	610 mm	841 mm

PULLMASTER planetary winches are covered by a liberal warranty. Parts and Repair Service are available from authorized **PULLMASTER** distributors throughout Canada, the United States and in most over-seas areas.

IMPORTANT

PULLMASTER planetary winches are neither designed nor intended for installation on equipment used in lifting or moving of personnel.

DISTRIBUTOR

