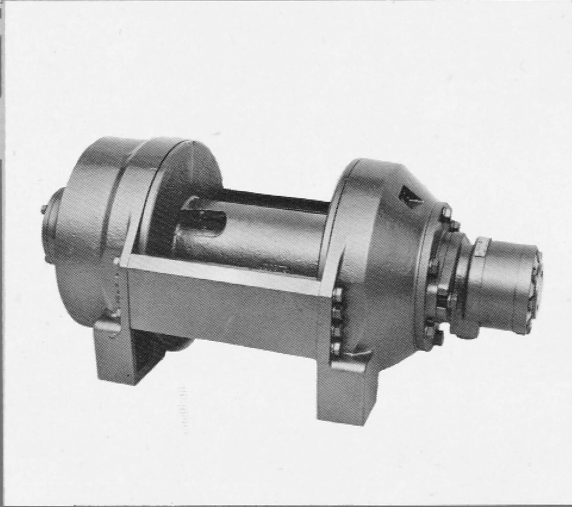
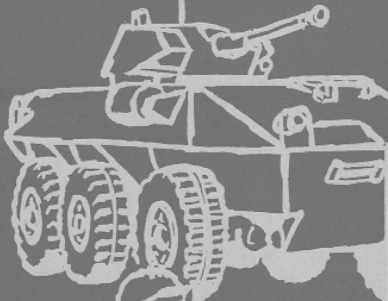


Ryan  Click Here To Visit
Hydraulic Service, Inc.

R5

PLANETARY, RECOVERY WINCH



POWER OUT

PLUS FREE SPOOLING

POWER IN

POWER UP

POWER DOWN



MASTER 

THE LOGICAL ALTERNATIVE

MODEL R5 PLANETARY, RECOVERY WINCH

DESCRIPTION

The PULLMASTER Model R5 is a high performance, high efficiency planetary recovery winch, with power in both directions and a "Free Spool" feature, which can be manually or hydraulically actuated.

Although the PULLMASTER Model R5 is a recovery winch, primarily used in mobile pulling operations, it can also be applied to raise and lower loads with complete control. This is made possible by the automatic multi-disc brake which is spring applied - pressure released and has dynamic and static function. A counter-balance or brake valve is not required for dynamic braking when the unit is used to lower a load.

The reduction ratio between input of the hydraulic motor and the output performance of the cable drum is 9.25:1 and is established by a planetary reduction stage.

When the PULLMASTER Model R5 is used to lower a load, the friction created in the disc brake assembly results in temperature. This temperature is dissipated by the intravert system which drains a circulation flow internally without a need for a vent line.

Free Spooling can be supplied either with a manually actuated Free Spool clutch or with a remote controlled hydraulic clutch actuation. After the Free Spool clutch has been disengaged, the wire rope can be pulled off the cable drum by hand. When the Free Spool clutch is re-engaged the unit is powered in both directions of rotation.

IMPORTANT: The "Free Spool" clutch can only be disengaged or re-engaged when there is no load on the wire rope and when the cable drum is stationary.

PERFORMANCE

- Based on a hydraulic volume of 15 (U.S.) gpm (57 l/min) at 2350 psi (162 bar) hydraulic pressure.
- Drum rotation at maximum hydraulic flow = 26 rpm
- Drum torque at maximum hydraulic pressure = 30,305 lb. in. (3424 Nm).

MODEL NUMBER	BARE DRUM		MEAN DRUM		FULL DRUM	
	LINE PULL	LINE SPEED	LINE PULL	LINE SPEED	LINE PULL	LINE SPEED
R5-12-70-1M	11020 lb	37 fpm	7400 lb	54 fpm	5660 lb	72 fpm
R5-12-70-1F	49.0 kN	11 m/min	33.2 kN	17 m/min	25.1 kN	22 m/min

* FREE SPOOLING IS IDENTIFIED BY "M" BEHIND THE LAST DIGIT OF THE MODEL NUMBER FOR MANUALLY ACTUATED OR "F" FOR HYDRAULICALLY ACTUATED FREE SPOOLING.

When the PULLMASTER Model R5 planetary recovery winch is installed into hydraulic circuit with lesser volume and/or pressure the above performance will change. Performance graphs are available upon request.

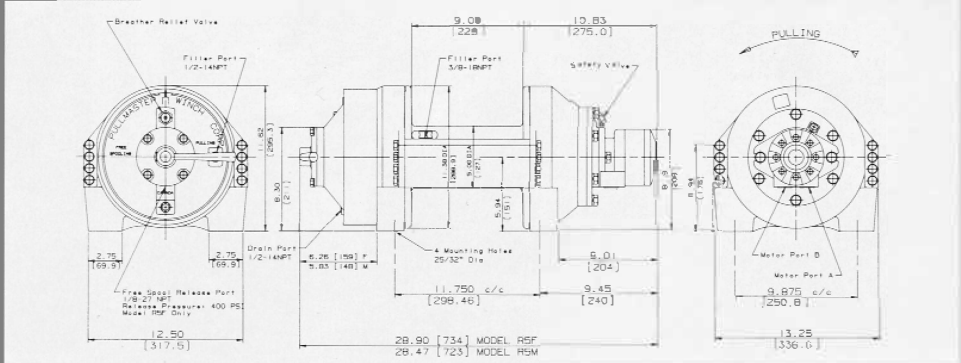
CABLE STORAGE

DRUM CABLE STORAGE CAPACITY FOR WIRE ROPE

MODEL NUMBER	DRUM SIZE			WIRE ROPE DIAMETER					
	BARREL	FLANGE	LENGTH	1/4 in	5/16 in	3/8 in	7/16 in	1/2 in	9/16 in
R5-12-70-1M	5 in	11.4 in	9 in	734 ft	482 ft	337 ft	267 ft	208 ft	160 ft
R5-12-70-1F	127 mm	290 mm	229 mm	224 m	147 m	103 m	81 m	63 m	49 m

The cable anchor of the PULLMASTER Model R5 is not designed to hold the rated maximum load. The cable drum requires 3 - 4 wraps of wire rope for security.

DIMENSIONS



PULLMASTER planetary winches are covered by a liberal warranty. Parts and repair service are available from authorized PULLMASTER distributors throughout Canada, the United States and most overseas areas.

IMPORTANT:

PULLMASTER planetary winches are neither designed nor intended for installation on equipment used in lifting or moving of personnel.

DISTRIBUTOR

Ryan  [Click Here To Visit](#)
Hydraulic Service, Inc.